

Cartwheels & Clovers

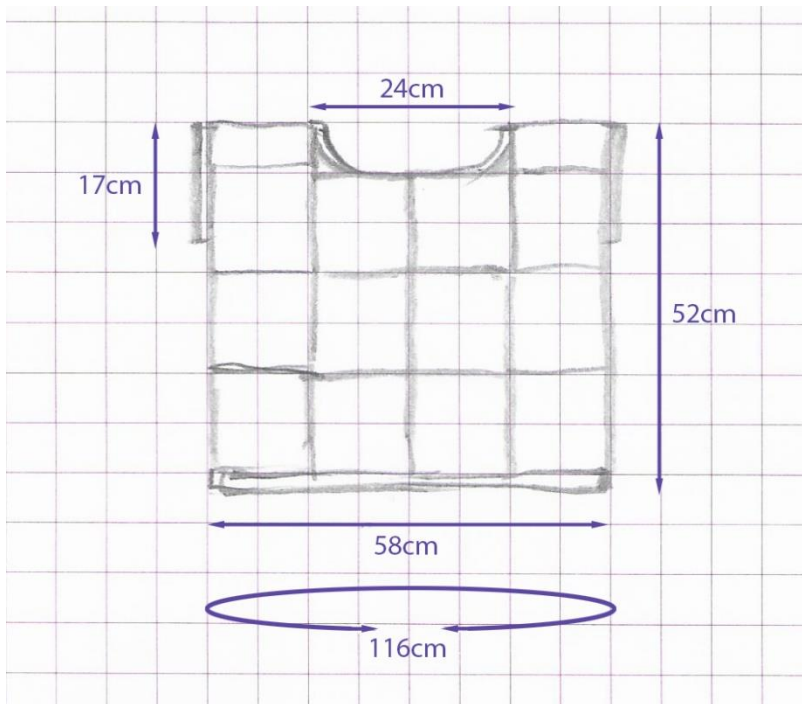
Layout & Construction Summary – 3ply Avocado Linen Top



A crochet pattern by Merrian Holland

US CROCHET TERMINOLOGY

Schematics



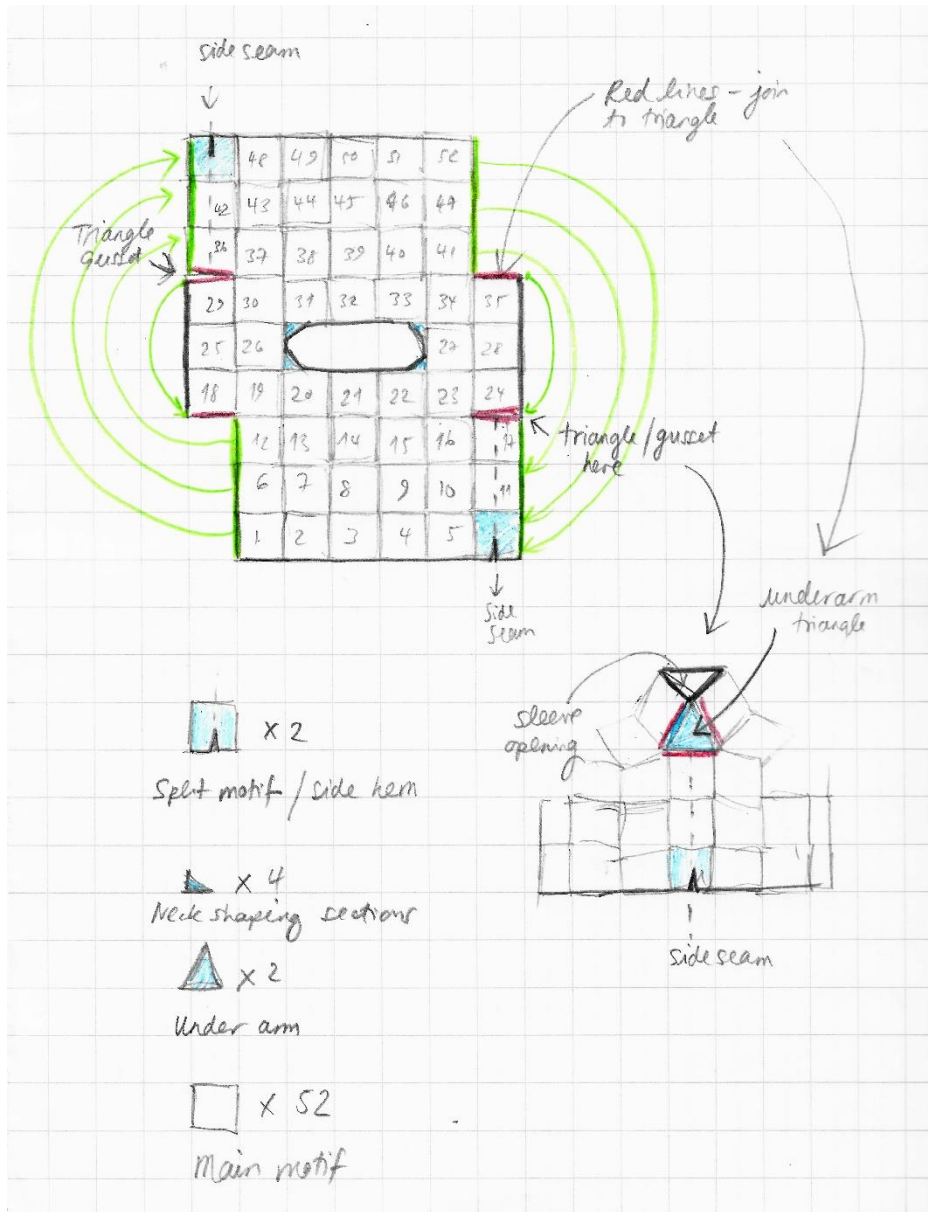
The measurements to the left are achieved with the following:

Yarn: 3ply/heavy lace linen

Hook: 2.25mm

Block size: 12cm x 12cm (after washing, blocking & drying)

Motif Layout & Order of Construction.



Make the motifs in the order shown, joining each when making the last round of the motif.

- Make the pieces for the neck yoke first, i.e. motifs 19-23, 26, 27, 30-34.
- Then do the neck shaping motifs and neck border. This is so that you can try the top on as you are working it.
- Make the main back & front sections, i.e. front motifs 12-16 6-10, 1-5 & back motifs 37-40, 43-46, 48-51.
- Join front & back using motifs 11, 17, 36 & 42 as the seaming motifs.
- Remember to seam the hem edges with the 2 split motifs.
- Make the sleeves by starting with motifs 25 & 26. Then make the sides of the sleeves with motifs 24 & 35 / 18 & 29, attaching them to the body of the sweater along 2 sides, and at the tip corner space at the sleeve edge but leaving the under-side seam open, ready to add the triangle/gusset motif.
- Add the triangle motifs.
- Make the sleeve border/edging.
- Make the hem edging.
- Wash, block, dry and wear with pride!